



# NEWSLETTER



Government of South Australia  
Department for Education

POORAKA PRIMARY SCHOOL R - 6  
11 SOUTH TERRACE, POORAKA 5095

Cooperation

Respect

Caring

Trust

Responsibility

## Important Dates

**Monday 12th June**  
Public Holiday

**Tuesday 13th June**  
Pupil Free Day

**Wednesday 21st June**  
Photo Day

## National Sorry Day 2023

On Friday 26th May, we acknowledged National Sorry Day in our classrooms and at a special assembly.



Students will share more in the next newsletter.



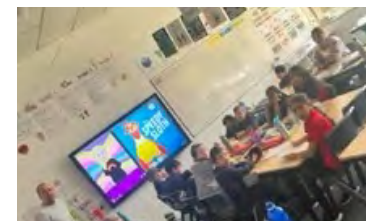
National Sorry Day is a day to acknowledge the strength of Stolen Generations Survivors and reflect on how Australians can all play a part in the healing process for the people and nation.

## National Simultaneous Storytime 2023 - The Speedy Sloth

Every year a picture book, written and illustrated by an Australian author and illustrator, is read simultaneously in libraries, schools, pre-schools, childcare centres, family homes, bookshops and many other places around the country.



On Wednesday 24th May, Pooraka Primary participated in the story time - with each class reading the book via the smartboard. Students loved predicating what the story would be about and voting about who would win the race. Classes talked about the book afterwards and unpacked the meaning of the story. The story was about setting personal challenges; perseverance; and being proud of your achievements.



## THE CHILL CLUB

**The chill club is asking for donations of old clean t-shirts. They will be making these great rag rugs. Donations can be dropped off at the front office.**



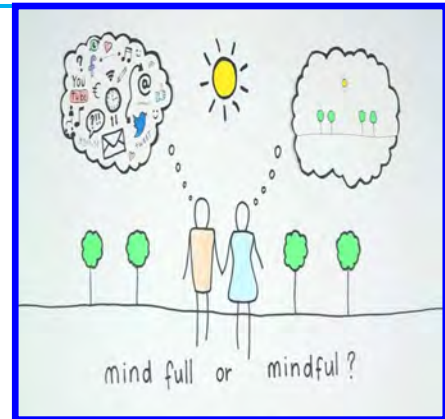
## Play is important

Play allows children to use their creativity while developing their imagination, dexterity, and physical, cognitive, and emotional strength.

Play is important to healthy brain development.

It is through play that children at a very early age engage and interact in the world around them.

At Pooraka Primary we do our best to support children to play and engage socially in safe and appropriate ways.



Play HELPS a child...



## SCHOOL UNIFORM

A reminder that our school uniform is navy blue or red polo tops (plain or with school logo only), with navy blue pants, shorts or leggings. Jumpers need to be plain navy blue. Hats are worn for all outdoor activities.

We ask that families support our uniform policy by sending your child to school in appropriate school clothes only.

Uniforms are available to purchase from the front office

## Garden Club & Lunch Club



The Garden Club have been busy creating crazy pavers for the garden beds. We are looking forward to finding the perfect spot for everyone to see them. Great job to all the kids and the help from Gerard.